

*[Anonyme]*  
*[Silvius Leopold Weiss ?]*

[Suite]  
[en sol majeur]

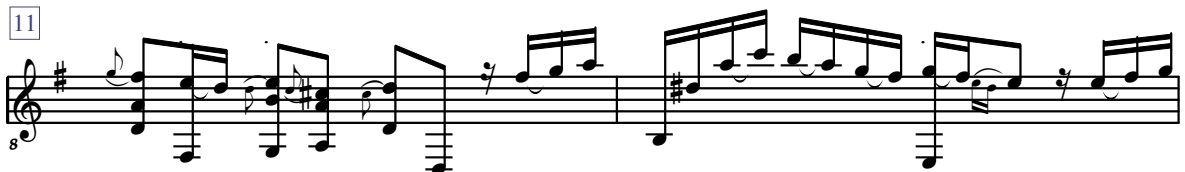
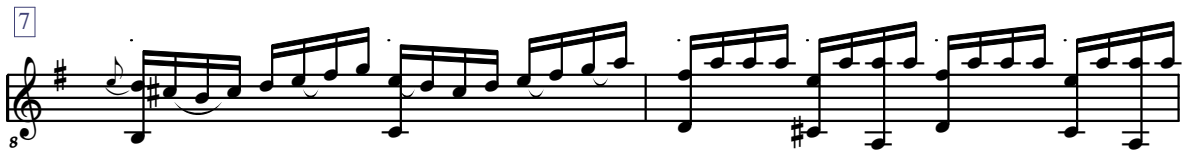
Manuscrit d'Haslemere (UK)  
Dolmetsch library  
II D 2

(Folios 79 à 82)

# Table des pièces

- 1 - Allemande
- 2 - Courante
- 3 - Arlequine
- 4 - Gigue
- 5 - Capriccio
- 6 - Menuet

# - Allemande



19

Musical notation for measure 19, featuring a treble clef, a key signature of one sharp (F#), and a common time signature. The notation includes a sequence of eighth and sixteenth notes, with a fermata over the final note. A small '8' is written below the first note.

21

Musical notation for measure 21, featuring a treble clef, a key signature of one sharp (F#), and a common time signature. The notation includes a sequence of eighth and sixteenth notes, with a fermata over the final note. A small '8' is written below the first note.

23

Musical notation for measure 23, featuring a treble clef, a key signature of one sharp (F#), and a common time signature. The notation includes a sequence of eighth and sixteenth notes, with a fermata over the final note. A small '8' is written below the first note.

25

Musical notation for measure 25, featuring a treble clef, a key signature of one sharp (F#), and a common time signature. The notation includes a sequence of eighth and sixteenth notes, with a fermata over the final note. A small '8' is written below the first note. A large 'R' is written below the staff.

27

Musical notation for measure 27, featuring a treble clef, a key signature of one sharp (F#), and a common time signature. The notation includes a sequence of eighth and sixteenth notes, with a fermata over the final note. A small '8' is written below the first note.

# - Courante



46

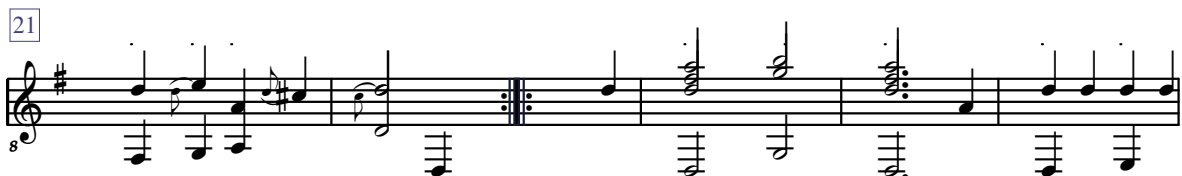
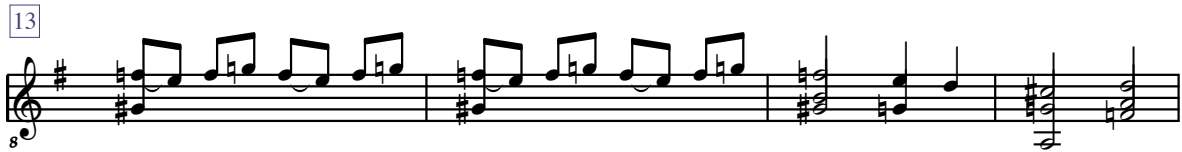
51

56

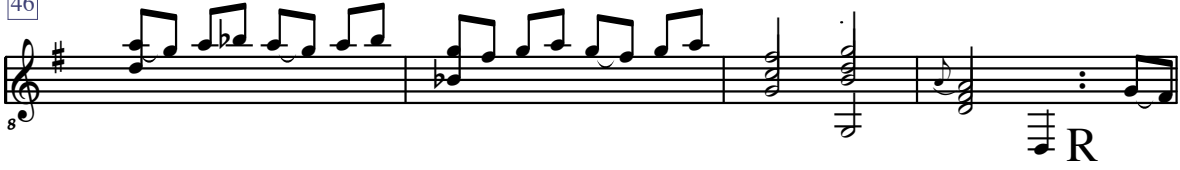
60

64

# - Arlequine



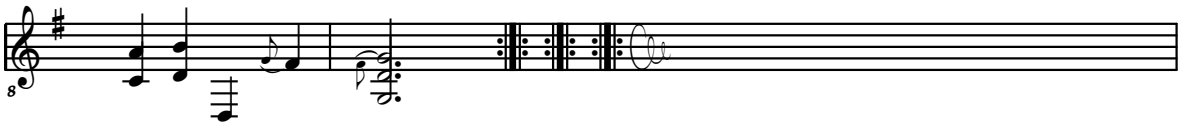
46



50

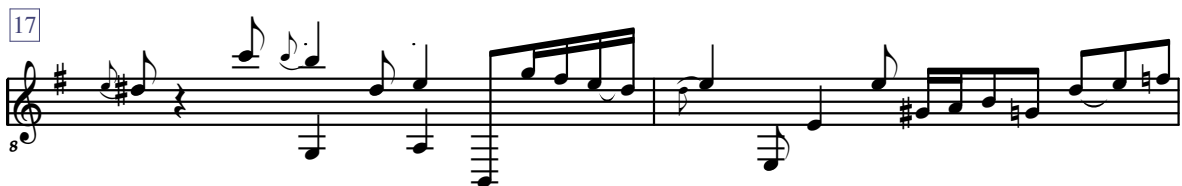


53





# - Gigue



19

Musical notation for measure 19, featuring a treble clef, a key signature of one sharp (F#), and a common time signature. The melody consists of eighth and sixteenth notes, with a bass line of eighth notes. A fermata is placed over the final note of the measure.

21

Musical notation for measure 21, featuring a treble clef, a key signature of one sharp (F#), and a common time signature. The melody consists of eighth and sixteenth notes, with a bass line of eighth notes.

23

Musical notation for measure 23, featuring a treble clef, a key signature of one sharp (F#), and a common time signature. The melody consists of eighth and sixteenth notes, with a bass line of eighth notes.

24

Musical notation for measure 24, featuring a treble clef, a key signature of one sharp (F#), and a common time signature. The melody consists of eighth and sixteenth notes, with a bass line of eighth notes.

26

Musical notation for measure 26, featuring a treble clef, a key signature of one sharp (F#), and a common time signature. The melody consists of eighth and sixteenth notes, with a bass line of eighth notes.

28

Musical notation for measure 28, featuring a treble clef, a key signature of one sharp (F#), and a common time signature. The melody consists of eighth and sixteenth notes, with a bass line of eighth notes.

30

Musical notation for measure 30, featuring a treble clef, a key signature of one sharp (F#), and a common time signature. The melody consists of eighth and sixteenth notes, with a bass line of eighth notes. The measure concludes with a double bar line and repeat signs.

# - Capriccio



46

52

57

63

67

71

76

# - Menuet

